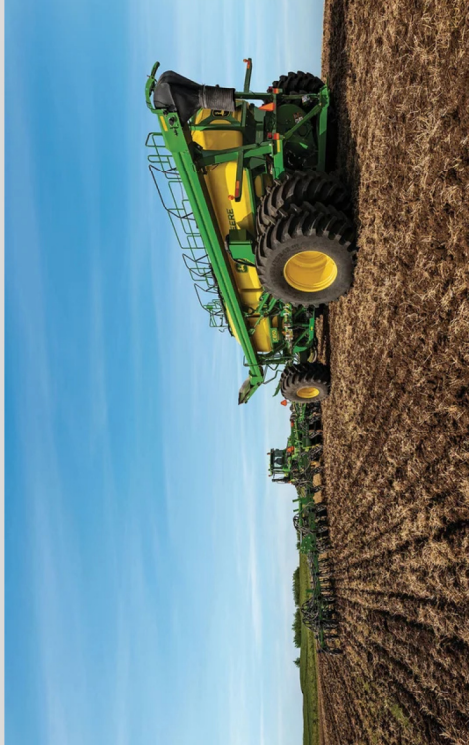


# TERRANU<sup>®</sup>

## Farm Direct Program

"Take Control of Your Yields"



### Directly Access the Secret of Yield Champions

You need the right fertilizer available at the right time to maximize your crop. Ensure your supply of TerraNu, the fertilizer driving national champion wheat yields. Midwestern BioAg has partnered with Meridian to provide storage for farmers to take direct shipments of TerraNu. Reduce your risk and drive your yields with the TerraNu Farm-Direct Program.

[TerraNu.info](http://TerraNu.info)

© 2023 Midwestern BioAg

**TERRANU**

**MERIDIAN**



# TerraNu Farm-Direct Program

## Invest in Assets

Purchase TerraNu direct from the source and receive rebates to pay for your new storage in five years or less.

## Risk Management

Know your fertilizer is available when the weather breaks instead of waiting for your supplier to restock and deliver it.

## Off-Season Pricing

Capitalize on seasonal advantages in fertilizer pricing and freight costs instead of paying peak rates for both.

## Product Integrity

Less handling means less product degradation. Spend more time moving and less time clearing plugged equipment.

## Meridian's Promise

Meridian's premium storage solutions are covered by an extensive manufacturer's warranty.

- 10-year structural warranty on bins
- 5-year powder coating warranty on bins
- 1-year structural and paint warranty on conveyers

# TERRANU®

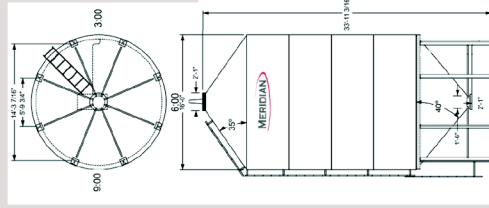


## Drop-In Replacement fertilizer to Unlock Your Yields

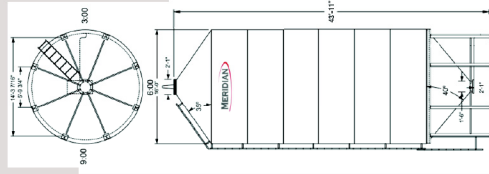
- Carbon-chelated nutrients drive germination and seedling development
- Maximize nutrients already in the field by feeding your soil's native biology
- Get the same analysis in every granule to provide your crop with consistent nutrition
- Prolong equipment life with less corrosive fertilizer
- Maximize your existing application methods (air-drill, strip-till, deep-banders, no-till drills, dry planters, broadcast, etc.)

## Meridian Multi-Purpose Smoothwall Bins Feature:

- Model 1620 & 1630
- Capacity of 108 & 154 tons
- Premium powder coat finish for years of corrosion and abrasion resistance
- Cone-shaped design ensures 100% clean out for zero waste
- Custom-designed venting helps prevent moisture inside the bin
- Premium, stainless steel, rack-n-pinion slide gate with crank
- Complete sidewall and roof ladder
- 24" clearance under the slide gate
- 15' 6" diameter/1520 multi-purpose bins are applicable for states that cannot ship 1620 bins
- Additional bin options available upon request



1620 - Can hold up to 108 ton of TerraNu



1630 - Can hold up to 154 ton of TerraNu



If you have any questions or are ready to sign up, contact your local TerraNu rep for more information.

**TerraNu.info**  
**608-437-4994**

Subject to Terms and Conditions in provided contract. Please see contract for details.